



Bathing establishment Fact Sheet

Bathhouse name	DONNA DI CUORI
Address	Viale della Vittoria n. 58
City	Marina di Cecina (LI)
Contacts	+39 3498459758
Website	https://www.facebook.com/DdC.BagnoDonnadicuori/?locale=it_IT

TESTED BY: [Handy Superabile - Social Promotion Association](#) in summer 2023

Please note The following information refers to the verification date shown at the bottom of each card. **The Association** is not responsible for any significant changes made by the property after the visit.

Summary

Bathing establishment Fact Sheet.....	1
Arrival at the facility	2
Private/public parking	2
Pathway from the parking lot to the main entrance	2
Reception	3
Bar/restaurant	3
Internal Pathways and common services	4
Internal Pathways	4
Toilet and shower accessible to guests with reduced mobility	5
Changing room.....	7
Beach.....	7
Children's play area.....	8
Swimming pool.....	8
Doctors' Offices/Healthcare Facilities	8

Project carried out with the contribution of the





Arrival at the facility

Private/public parking

Presence of private parking	NO
Type of private car park	Not present
Presence of parking space reserved for people with disabilities	NO
Public parking nearby	YES
Type of public car park	asphalt

Pathway from the parking lot to the main entrance

Pathway from the car park to the entrance	by ramp length 120 cm, width 102 cm, slope 6.8%
There are markers and tactile maps	NO
Usable door/entrance width	more than 90 cm





Reception

Umbrella booking system	<input type="checkbox"/> Via web <input checked="" type="checkbox"/> By phone <input checked="" type="checkbox"/> On-site
Presence of multilingual staff	YES
Presence of plant plan with key to services available	YES
Presence of visuo-tactile map	NO
Bulletin board/information panels at an average height of 130 cm in a well-lit area and font size at least 14 dpi with a contrast ratio greater than 4.5:1	YES
The staff attended training courses on welcoming people with different disabilities	NO

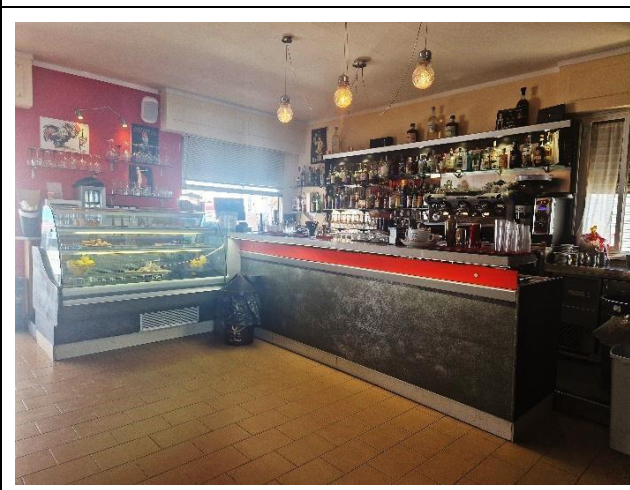
Bar/restaurant

Type of venue	Bar
Access to the premises	By means of a 0.5 cm door knocker step and a ramp length cm, width cm slope %
Usable door/entrance width	more than 90 cm
Bar counter	more than 100 cm
Types of tables	4- legged
Space underneath the tables from the floor	65 cm
Multilingual menu	Not detected
Menus with large print fonts	NO
Braille menu	NO





Table service for people with disabilities	YES
Availability of gluten-free food	<input type="checkbox"/> bread <input type="checkbox"/> pasta <input type="checkbox"/> biscuits <input checked="" type="checkbox"/> ice cream <input type="checkbox"/> Pre-packaged foods



Internal Pathways and common services

Internal Pathways

Indicate whether the pathways connecting the entrance to the beach are flat or with ramps in addition to those already described	flat paths, with a 2 cm step and subsequent access ramp from the beach to the bar 75 cm long 100 cm wide with a 6.6% slope
--	--





Toilet and shower accessible to guests with reduced mobility

Number of toilets accessible/usable by guests with reduced mobility	1
Access to the premises	by ramp length 14 cm, width 80 cm, gradient 22.4 %
Usable width of the entrance door	80 cm
Toilet height	51 cm
Open front toilet seat	NO
Support handles	to the right of the toilet
Flexible hand shower at the side of the toilet	YES
Free space on the sides of the toilet	left more than 90 cm right 19 cm frontal higher than 52 Cm
Electric doorbell/phone	YES
Washbasin with space underneath for wheelchair	68 cm
Height from the ground on the bottom edge of the mirror	sufficient for use by wheelchair users
Baby changing table	NO





<p>Accessible shower available for guests with reduced mobility</p>	<p>SI separated from the toilet room</p>
<p>Access to the shower room if separated from the toilet room</p>	<p>by ramp length 106 cm, width 90 cm, slope 4.7% and door knocker step of 2 cm</p>
<p>Useful width of the door/entrance gate if separated from the toilet room</p>	<p>more than 90 cm</p>
<p>Shower type</p>	<p>open-type</p>
<p>Floor-level shower</p>	<p>YES</p>
<p>Shower chair</p>	<p>missing</p>
<p>Grab bar</p>	<p>missing</p>
<p>Presence of shower head or ups and downs</p>	<p>fixed shower head</p>
<p>Electric doorbell/phone</p>	<p>NO</p>





Changing room

Accessible changing room available for guests with reduced mobility	YES, shared with the toilet room
Access to the premises	Flat
Usable door/entrance width	80 cm
Size of the dressing room	width 131 cm and depth 323 cm
Presence of a cot	NO
Coat rack height from the ground	less than 140 cm and can be used by people in wheelchairs

Beach

Type of beach	sand
Access to the beach	by 100 cm wide walkway and 2% slope
Walkway to reach the umbrellas	YES
Type of walkway	Mixed PVC/self-locking
Walkway width	100 cm





<p>Removable Platform between the walkway and the umbrella station to facilitate the passage and parking wheelchair</p>	<p>YES</p>
<p>Amphibious beach chair available for helping people with reduced mobility to enjoy swimming (owned by the establishment or by association)</p>	<p>YES</p>

Children's play area

<p>Children's play area</p>	<p>Not detected</p>
-----------------------------	---------------------

Swimming pool

<p>The property has a swimming pool</p>	<p>NO</p>
---	-----------

Doctors' Offices/Healthcare Facilities



Project promoted by



Regione Toscana

Hospitals near the facility	Ospedale di Cecina Via Montanara, n. 52 B, 57023 Cecina LI - 0586614111
Other Healthcare Facilities	Tourist medical service Viale Galliano Marina di Cecina Tel. 0586611666 (h. 20-8)

TESTED BY: Handy Superabile Social Promotion Association in summer 2023

Project carried out with the contribution of the



**Presidenza del
Consiglio dei Ministri**
Ministro per la disabilità