



Accommodation Sheet

General informations

Name of accommodation facility	Hotel Ausonia
Typology	Hotel/inn
Address	Viale Matteotti 74 a
City	Follonica (GR)
Contacts	Tel. +39 056640096 https://www.hotelausonia.net/en/
Website	https://www.hotelausonia.net/en/
Accessible website compliant with WCAG 2.1	NO
Online reservations	YES
Short description	The Ausonia hotel overlooks the Gulf of Follonica, a climatic-seaside resort in the Tuscan Maremma, a few meters from the sea

TESTED BY: [Handy Superabile Social Promotion Association](#) in 2024

Please note The following information refers to the verification date shown at the bottom of each sheet. The Association is not responsible for any significant changes made to the property after the visit.





Summary

Accommodation Sheet.....	1
General informations.....	1
Arrival at the facility.....	3
How to reach the property.....	3
Pathway from the private/public car park to the entrance	4
Structure entrance	5
Hall - Reception	5
Rooms/apartments	7
Rooms/apartments adapted for guests with reduced mobility.....	7
Toilet in the room for guests with reduced mobility	8
Bar/restaurant	9
Internal pathways and common services	12
Internal pathways.....	12
Common toilets.....	13
Beach.....	14
Common toilets.....	16
Bar of the beach establishment	17
Medical practices/health facilities.....	17





Arrival at the facility

How to reach the property

By car	<p>From the north-west (Turin - Genoa - Ventimiglia): A12 motorway obligatory exit (Rosignano), when you cross the SS Aurelia take the direction of Grosseto and exit at Follonica nord and follow for Follonica centro.</p> <p>From the north-east (Venice - Bologna - Trieste): A1 motorway to Florence Signa, take the FI-PI-LI towards Livorno, at Collesalveti take the A12 towards Rome, then exit at Rosignano, then take the SS Aurelia towards Grosseto and exit at Follonica Nord and follow signs for Follonica centro.</p> <p>From the South (Naples - Bari): A1 or A24 to Rome, then the A12 to Civitavecchia where you then take the SS, Aurelia northwards, until you reach Follonica centre.</p>
By plane	
Assistance service for people with disabilities	YES
Boarding/disembarking of passengers with reduced mobility	with courtesy chair and ambulift/finger
Tactile itineraries for the blind and visually impaired	YES
There is an accessible toilet room with support handles	YES
On the train	
Nearest station	Follonica station 500 m away





Assistance service for people with disabilities	YES
Any notes	



Pathway from the private/public car park to the entrance

Presence of private parking	NO
Public parking nearby	YES
Type of public car park flooring	asphalt
Presence of parking space reserved for people with disabilities in the public car park	YES number 2
Describe the pathway from the car park to the entrance and any critical issues	Through a short stretch of asphalt and a connected sidewalk
Distance from the car park to the entrance	10 m





Structure entrance

There is an accessible entrance	YES main entrance
Method of access to the structure	<input checked="" type="checkbox"/> flat
Type of entrance door	with 2 automatic doors
Useful width of door/entrance passage	greater than 110 cm
There are indicators and tactile maps	NO
	

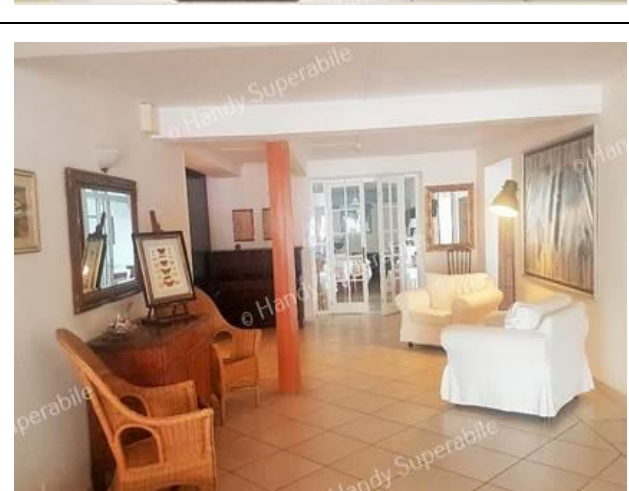
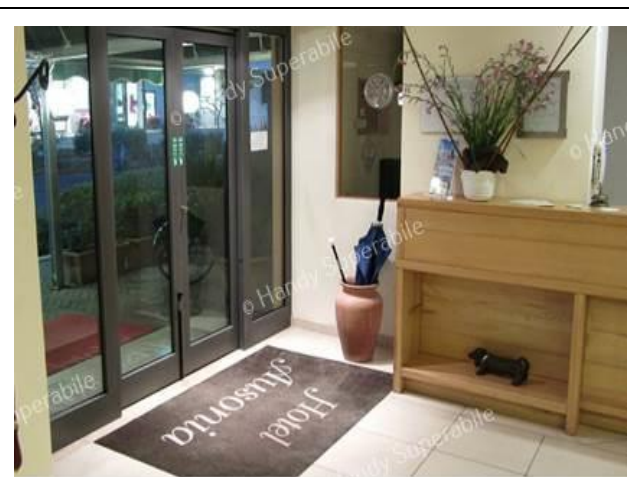
Hall - Reception

How to reach it from the entrance	flat
Reception desk height	bench exceeding 100 cm
Presence of multilingual staff	YES
Type of information material	<input type="checkbox"/> YES with tactile maps/signals <input checked="" type="checkbox"/> YES with brochure





<p>Initial assistance is provided for visitors with disabilities</p>	<p><input checked="" type="checkbox"/> YES with orientation tour of the facility <input checked="" type="checkbox"/> YES with room accompaniment <input checked="" type="checkbox"/> YES with portorage service</p>
<p>The following aids are provided for visitors with disabilities</p>	<p><input type="checkbox"/> manual wheelchair <input type="checkbox"/> crutches <input type="checkbox"/> comfortable shower chair</p>
<p>The staff followed a training course on welcoming people with various disabilities</p>	<p>NO</p>





Rooms/apartments

Rooms/apartments adapted for guests with reduced mobility

Number and type of rooms/apartments equipped/usable by people with reduced mobility	<input checked="" type="checkbox"/> double room snumber 1ground floor
Access to the room	<input checked="" type="checkbox"/> flat
	
Type of entrance door	With key
Useful width of entrance door	greater than 90 cm
Type and height of bed	double bed height not noted
Free spaces at the sides of the bed	to the leftgreater than 90 cm To the right54 cm frontgreater than 90 cm
Wardrobe type	ante
Free space under the desk	77 cm
They are available in the room	<input checked="" type="checkbox"/> safe <input checked="" type="checkbox"/> mini-bar <input type="checkbox"/> water kettle <input type="checkbox"/> iron





Toilet in the room for guests with reduced mobility

Access to the venue	flat
Useful width of entrance door	82cm
Door type	with door opening inwards
WC height	50cm
Toilet seat with open front tooth	YES
Support handles	on both sides
Flexible shower next to the toilet	NO
Free space on the sides of the toilet	to the left greater than 90 cm To the right 25cm Front greater than 90 cm
Electric bell/telephone next to the toilet	NO
Washbasin with space underneath for a wheelchair	greater than 70 cm
Height from the ground to the lower edge of the mirror	sufficient for use by a person in a wheelchair but not reclining







	
Shower accessible to guests with reduced mobility available	YES flush with the floor
Shower type	open type
Shower chair	folding with height 50 cm
Support handle	YES
Presence of shower head or latch	ups and downs
Electric bell/telephone on the shower side	NO

Bar/restaurant

Type of venue	Bar
Access to the venue	<input checked="" type="checkbox"/> via ramp single length 140 cm, width 130 cm, slope 10%
Useful width of door/entrance passage	greater than 90 cm
Bar counter height	115cm
Buffet counter height	90cm tall
Type of tables	with 4 legged
Space under the floor tables	70cm
Availability of high chairs for newborns	NO





There are coffee and milk dispensers	YES with button placed 90 cm from the ground
There are toilets that can be used by a guest with reduced mobility (see "toilets accessible in internal routes and common services)	YES
There is an area reserved for lunch for younger guests	NO
An equipped baby bottle service is available	NO
	

Type of venue	Restaurant
Access to the venue	<input checked="" type="checkbox"/> via ramp single length 130 cm, width 140 cm, slope 3%
Useful width of door/entrance passage	greater than 100 cm
Type of tables	with 4 legged
Space under the floor tables	68 cm
Availability of high chairs for newborns	NO
Multilingual menu	NO
Menu with apps	NO
Braille menu	NO
Table service for people with disabilities	YES





Availability of food for celiacs	YES but it is necessary to communicate this to the hotel in advance
There are coffee and milk dispensers	NO table service is available
It is possible to always reserve the same table for a customer with reduced mobility	YES
There are toilets that can be used by a guest with reduced mobility (see "toilets accessible in internal routes and common services)	YES
There is an area reserved for lunch for younger guests	NO
An equipped baby bottle service is available	NO
	
	
The restaurant has an outdoor veranda/dehors	YES with level access





Type of tables	with 4 legged
Space under the floor tables	Sufficient to accommodate the wheelchair
	

Internal pathways and common services

Internal pathways

Approximate distances from the room/apartment/bungalow visited and intended for customers with disabilities to the various main common areas	Entrance (Hall) 10 m Main restaurant 10 m Beach 100 m
Indicate whether the paths connecting to the common areas are flat or with ramps or steps, in addition to those already described	Entrance (Hall) flat Main restaurant with ramp Beach with ramps
Elevator to reach non-accessible rooms on upper floors	YES, with sliding door 75 cm wide - cabin 120 cm deep, 80 cm wide, call button located 110 cm from the ground, internal pushbutton panel 107 cm high with raised buttons and support handle.





<p>From the room visited to the common areas there are maps and tactile signs for the blind</p>	<p>NO</p>

Common toilets

Location of the venue	near the hall
Access modeto the venue	flat
Useful width of entrance door	85cm
Door type	with door opening inwards
WC height	Not detected
SeatToilet with open front tooth	YES
Support handles	to the left of the toilet
Flexible showernext to the toilet	NO
Free spaceon the sides of the toilet	to the left greater than 80 cm To the rightChoose an item. Front greater than 80 cm
Electric bell/telephonenext to the toilet	NO
Washbasinwith space underneath for a wheelchair	Can be used by guests in a wheelchair
Height from the ground to the lower edge of the mirror	sufficient for use by a person in a wheelchair





Changing table for newborns	NO
	

Beach

Type of beach	sand
Access to the beach	with number of steps 7 that can be overcome with 2 ramps, the first 6 meters long and 4% slope, the second 8 meters long, 8% slope
Walkway to reach the umbrellas	YES
Type of walkway	wood
Walkway width	90cm







<p>Also removable platform between the walkway and the umbrella station to facilitate passage and parking with a wheelchair</p>	<p>YES</p>
<p>Available amphibious bathing chair for people with reduced mobility owned or through a bathing association</p>	<p>YES</p>
<p>A shower is located in the area</p>	<p>YES with a 2 cm high step, floor-level shower cubicle, with a sliding rail for the shower and a plastic chair is provided on request.</p>
<p>On the beach there are toilets that can be used by guests with reduced mobility (see internal routes and common services sheet)</p>	<p>YES</p>

Project carried out with the contribution of







Common toilets

Location of the room	near the beach
Method of access to the venue	flat
Useful width of entrance door	95cm
Door type	with door that opens outwards
WC height	50cm
Toilet seat with open front tooth	NO
Support handles	on both sides
Flexible shower next to the toilet	YES
Free space on the sides of the toilet	to the left greater than 100 cm To the right 20cm Front greater than 100 cm
Electric bell/telephone next to the toilet	YES
Washbasin with space underneath for a wheelchair	70cm
Height from the ground to the lower edge of the mirror	missing mirror
Baby changing table	NO
	





Bathing establishment bar

Type of venue	Bar
Access to the venue	<input checked="" type="checkbox"/> flat
Bar counter height	113 cm
Type of tables	with 4 legged
Space under the floor tables	65 cm
Availability of food for celiacs	ice creams
	

Medical practices/health facilities

Hospitals near the facility	<p>Sant'Andrea Hospital and Emergency Room, Viale Risorgimento 43, Massa Marittima (GR) Tel +39 0566 9091111 – 20 km</p> <p>Misericordia Hospital and Emergency Room, Via Senese 161, Grosseto Tel +39 0564 485111 - 50 km</p>
-----------------------------	--



Project promoted by



Regione Toscana

Any dialysis facilities	Nephrology and dialysis unit at Misericordia hospital in Grosseto. Tel +39 0564 485218 0564 485159 – 50 km E-mail alberto.papi@uslsudest.toscana.it
Other healthcare facilities	ASL clinic, Viale Europa 5 Follonica (GR) Tel +39 0566 909111 - 3 km

TESTED BY: [Handy Superabile Social Promotion Association](#) in 2024

Project carried out with the contribution of



**Presidenza del
Consiglio dei Ministri**
Ministro per la disabilità