



Accommodation Sheet

General information

Name of accommodation facility	Golden Tower Hotel
Typology	Hotel/Inn
Address	Strozzi Square 11/R
City	Florence (FI)
Contacts	Tel. +39 055 287860 info@goldentowerhotel.it
Website	https://www.goldentowerhotel.it/en
Accessible website compliant with WCAG 2.1	NO
Online bookings	YES
Short description	Golden Tower Hotel & Spa is much more than a 5-star hotel, it is a place full of charm and history where guests can spend a stay in Florence enjoying a privileged position in the most exclusive area of Florence, in Piazza Strozzi next to the Palazzo of the same name.

TESTED AND REVIEWED BY: [Handy Superabile Social Promotion Association](#) in 2024

Please note The following information refers to the verification date reported at the bottom of each sheet. The Association is not responsible for any significant changes made by the facility after the visit.





Summary

Accommodation Sheet.....	1
General information	1
Arrival at the facility.....	3
How to reach the property.....	3
Pathway from private/public parking to the entrance	4
Entrance to the building	4
Hall - Reception	5
Rooms/apartments	6
Rooms/apartments adapted for guests with reduced mobility.....	6
Toilet in the guest room for people with reduced mobility	8
Bar/Restaurant.....	10
Internal pathways and common services	11
Internal pathways.....	11
Common toilets.....	12
Medical offices/healthcare facilities.....	13





Arrival at the facility

How to reach the property

By car

The Golden Tower Hotel & Spa is located in Piazza Strozzi 11R, in a quiet pedestrian area, ideal for your relaxation. Guests can arrive directly in front of the entrance of the Hotel with their own car. Access to Piazza Strozzi is possible from Via degli Anselmi, where the Odeon Cinema is located. Access to Piazza Strozzi from Via degli Anselmi is regulated by the traffic police via a passage protected by mobile bollards (pilomat). The bollards will be raised from 0-24 hours on all weekdays and holidays except during the time slots 6-9:00, in which access to the pedestrian area is permitted to authorized vehicles. Their movement outside the above-mentioned hours can take place, for guests of the Golden Tower Hotel & Spa, by calling the toll-free number 800 283 060, also shown on the signs on site, or by contacting the hotel directly at 055 287860.

Exiting at the Firenze ovest/nord toll booth, follow the signs for the train station. Once you reach Piazza Stazione, turn right onto Via Santa Caterina da Siena, at the traffic lights turn left onto Via della Scala and continue until Piazza Santa Maria Novella. Turn right onto Via dei Fossi and continue until Piazza Goldoni and then take the roundabout and take Via della Vigna Nuova. Continue straight onto Via Degli Strozzi and at the first right take Via de Sassetti and immediately right onto Via degli Anselmi.

By train





Nearest station	Florence – Santa Maria Novella station 850 m away
Assistance service for people with disabilities	YES

Pathway from private/public parking to the entrance

Presence of private parking	NO
Public parking nearby	YES Garage of the Spa
Type of public parking pavement	self-locking
Presence of parking space reserved for disabled people in public parking	NO
Describe the route from the parking lot to the entrance and any critical issues	Across sidewalks
Distance from the parking lot to the entrance	300 m

Entrance to the building

There is an accessible entrance	YES main entrance
How to access the facility	<input checked="" type="checkbox"/> via ramp single length 104 cm slope 24%, from the bottom in outdoor carpet
Type of entrance door	with 2 doors
Usable width of door/entrance opening	80 cm
There are indicators and tactile maps	NO





Hall - Reception

How to get there from the entrance	on the flat
Reception desk height	bench higher than 100 cm
Presence of multilingual staff	YES
Type of information material	<input type="checkbox"/> YES with tactile maps/signs <input checked="" type="checkbox"/> YES with brochure
Initial assistance is provided for visitors with disabilities	<input checked="" type="checkbox"/> YES with orientation tour of the structure <input type="checkbox"/> YES with accompaniment to the room <input checked="" type="checkbox"/> YES with porterage service
The following aids are provided for visitors with disabilities	<input checked="" type="checkbox"/> manual wheelchair <input type="checkbox"/> crutches <input type="checkbox"/> comfortable shower chair
The staff has attended a training course on welcoming people with different disabilities	NO





Rooms/apartments

Rooms/apartments adapted for guests with reduced mobility

Number and type of rooms/apartments equipped/usable by people with reduced mobility	<input checked="" type="checkbox"/> roomsno. 2
Access to the room	<input checked="" type="checkbox"/> via elevator door width 80 cm, cabin width 92 cm, cabin depth 127 cm, call button height 115 cm, height of highest keypad button 136 cm, raised/braille keys





Type of entrance door	with knob handle
Usable width of entrance door	78 cm
Bed type and height	60cm high double bed
Free spaces on the sides of the bed	leftChoose an item. To the rightgreater than 90 cm front67 cm
Cabinet type	with doors
Free space under the desk	62 cm
They are available in the room	<input checked="" type="checkbox"/> safe <input checked="" type="checkbox"/> mini-bar <input type="checkbox"/> water boiler <input type="checkbox"/> iron





Toilet in the guest room for people with reduced mobility

Access to the premises	on the flat
Usable width of entrance door	greater than 90 cm in both the equipped and non-equipped bathroom
Door type	with a door that opens outwards
Toilet height	51 cm
Toilet seat with open front tooth	NO
Support handles	on both sides
Flexible shower head next to the toilet	YES
Free space on the sides of the toilet	left 65 cm To the right Choose an item. front greater than 100 cm
Electric bell/telephone next to toilet	YES
Sink with space underneath for wheelchair access	greater than 70 cm
Height from ground to lower edge of mirror	sufficient for use by a person in a wheelchair





<p>Shower accessible to guests with reduced mobility available</p>	<p>YES with a 2 cm high step, in the unequipped bathroom there is a bathtub</p>
<p>Shower type</p>	<p>open type</p>
<p>Shower chair</p>	<p>Foldable 51 cm high and dimensions 35x35 cm</p>
<p>Support handle</p>	<p>NO</p>
<p>Presence of shower head or shower rail</p>	<p>lift with lowest point height 106 cm</p>
<p>Shower side electric bell/telephone</p>	<p>YES</p>

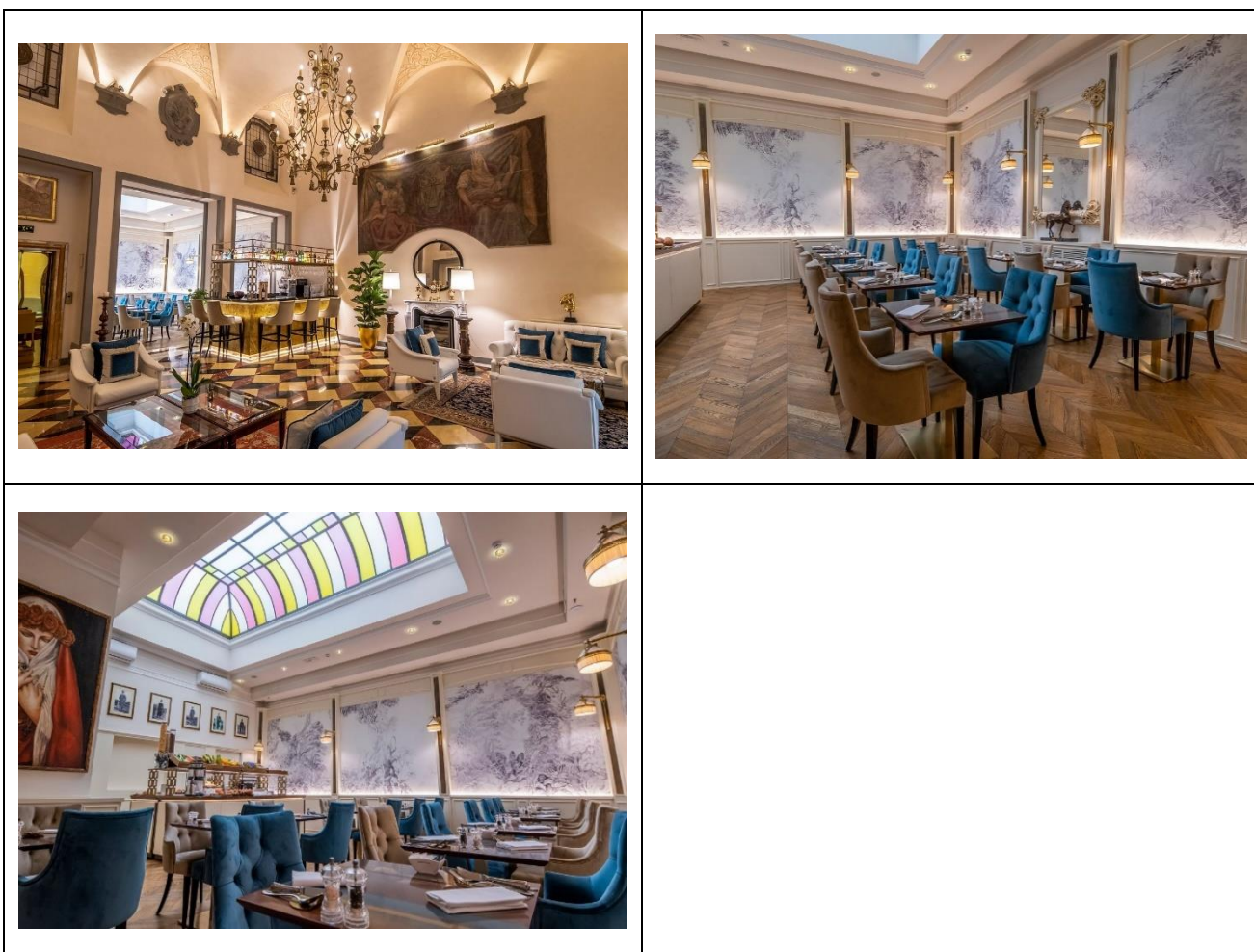




Bar/Restaurant

Type of premises	Restaurant
Access to the premises	<input checked="" type="checkbox"/> via elevator <input type="checkbox"/> door width 80 cm, cabin width 92 cm, cabin depth 127 cm, call button height 115 cm, height of highest keypad button 136 cm, raised/braille keys
Usable width of door/entrance opening	greater than 90 cm
Buffet counter height	81 cm
Type of tables	with central support
Space under the floor tables	74 cm
Table service for people with disabilities	YES
Availability of food for celiacs	<input type="checkbox"/> bread <input type="checkbox"/> pasta <input type="checkbox"/> cookies <input type="checkbox"/> ice creams <input checked="" type="checkbox"/> pre-packaged foods
There are coffee and milk dispensers	YES with button placed 111 cm from the ground
Availability of high chairs for babies	YES
There are toilets that can be used by a guest with reduced mobility (see "accessible toilets in internal routes and common services)	YES





Internal pathways and common services

Internal pathways

Indicate whether the connecting routes to the common areas are flat or have ramps or steps, in addition to those already described

Entrance (Hall) on the flat
Main restaurant with elevator door width 80 cm, cabin width 92 cm, cabin depth 127 cm, height of call button 115 cm, height of highest keypad button 136 cm, raised/braille keys





From the room visited to the common areas there are maps and tactile signals for the blind	NO
--	----

Common toilets

Location of the premises	near the hall
How to access the premises	on the flat
Usable width of entrance door	of the anteroom 88 cm and of the bathroom 88 cm
Door type	with a door that opens outwards
Toilet height	55 cm
Toilet seat with open front tooth	NO
Support handles	on both sides
Flexible shower head next to the toilet	NO
Free space on the sides of the toilet	left 70 cm To the right Choose an item. front 72 cm
Electric bell/telephone next to toilet	YES
Sink with space underneath for wheelchair access	less than 70 cm
Height from ground to lower edge of mirror	not sufficient for use by a person in a wheelchair
Baby changing table	NO





Medical offices/healthcare facilities

Hospitals near the facility

Careggi Hospital, Largo Brambilla 3
Florence, Tel +39 055 794111

S. Maria Nuova Hospital, Piazza S. Maria
Nuova 1, Florence, Tel +39 055 69381

Piero Palagi Hospital, Via Michelangelo 41,
Florence, Tel +39 055 6937249

San Giovanni di Dio Hospital, Via Torregalli
1, Florence, Tel +39 055 693211

Meyer Children's Hospital, Via Pieraccini 24,
Florence, Tel +39 055 56621

Any dialysis facilities

San Giovanni di Dio Hospital, Via Torregalli
1, Florence

Dr. Alberto Rosati Tel +39 055 6932238 -
alberto.rosati@uslcentro.toscana.it

S. Maria Nuova Hospital, Piazza S. Maria
Nuova 1, Florence

Project realized with the contribution of the





	SOS Nephrology and dialysis Dr. Raffaella Siervo Tel +39 055 6938610 nefrologiasmn@uslcentro.toscana.it
Other health facilities	Usl Toscana Centro, Via Chiusi, Florence, Tel +39 055 6935406 Usl Toscana Centro Via D'Annunzio 29, Florence, Tel +39 055 6934901 Usl Toscana Centro, territorial office, Via Fanfani 17, Florence, Tel +39 055 6939350

