



## Accommodation sheet

### General information

Accommodation name	Panoramic
Typology	Hotel
Address	Via di Cagnano, 13
City	Montepulciano (SI)
Contacts	Tel. +39 0578 798398 <a href="mailto:info@hotelpanoramic.com">info@hotelpanoramic.com</a>
Website	<a href="https://www.hotelpanoramic.com/en">https://www.hotelpanoramic.com/en</a>
WCAG 2.1 compliant accessible website	NO
Online bookings	YES
Short description	<p>The Hotel Panoramic is located in one of the most enchanting tourist resorts in Tuscany, Montepulciano, known as the Pearl of the 500s for its still intact Renaissance heritage.</p> <p>The structure visited is immersed in the green Tuscan countryside. The hotel supports the concept of accessibility that goes beyond the absence of architectural barriers and offers a tourist proposal that respects different needs, raising the quality of hospitality.</p>

**TESTED AND REVIEWED BY:** [Handy Superabile Social Promotion Association](#) in 2024

**Please note** The following information refers to the date of verification shown at the bottom of each sheet. **The Association** is not responsible for any significant changes made by the property after the visit.





---

## Summary

Accommodation sheet .....	1
General information .....	1
Arrival at the property.....	3
How to reach the property.....	3
Pathway from the private/public car park to the entrance .....	3
Entrance to the structure.....	4
Hall - Reception .....	5
Rooms/apartments .....	6
Rooms/apartments adapted for guests with reduced mobility.....	6
Toilet facilities in the guest room for guests with reduced mobility.....	8
Bar/restaurant .....	10
Internal pathways and common services .....	11
Internal pathways.....	11
Communal toilets .....	11
Swimming pool .....	12
Medical practices/healthcare facilities.....	13





## Arrival at the property

### How to reach the property

By car	<p>By car from the north - A1 motorway exit - Valdichiana-Bettolle (N.28), up to Torrita (5 Km), and then continue to Montepulciano (8 Km), After 2 Km on the left you will find the Il Pulcino Restaurant, again 500mt. and on the left you will see the entrance to the hotel.</p> <p>From the south - exit A1 Chiusi-Chianciano Terme (N.29), continue to Chianciano Terme (7 KM), from here to Montepulciano (10 km) and after S.Albino another 1 km and on the right the entrance to the hotel.</p>
By train	
Nearest station	Chiusi train station 22 km away
Assistance service for people with disabilities	YES

### Pathway from the private/public car park to the entrance

Presence of private parking	YES
Type of flooring of the private parking lot	asphalt
Presence of parking space reserved for people with disabilities in the private parking lot	NO
Describe the route from the car park to the entrance and any critical issues	flat
Distance from parking to entrance	A few tens of meters





**Entrance to the structure**

There is an accessible entrance	YES main entrance
How to access the structure	<input checked="" type="checkbox"/> via ramp single length 1 m, with terracotta flooring and with a moderate slope
Type of entrance door	Automatic
Useful width of door/entrance gate	Above 90 cm
There are indicators and tactile maps	NO





**Hall - Reception**

How to reach it from the entrance	Via three steps , but the reception staff is available to receive and assist, for check-in/out, the guest with reduced mobility, directly in the lobby, accessible on the floor
Reception desk height	bench over 100 cm
Presence of multilingual staff	YES
Type of information material	<input type="checkbox"/> YES with maps/tactile signals <input checked="" type="checkbox"/> YES with brochure
Initial assistance is provided for visitors with disabilities	<input checked="" type="checkbox"/> YES with orientation tour of the structure <input type="checkbox"/> YES with room accompaniment <input type="checkbox"/> YES with porter service
The following aids are provided for visitors with disabilities	<input type="checkbox"/> manual wheelchair <input type="checkbox"/> Crutches <input type="checkbox"/> Comfortable shower chair
The staff followed a training course on welcoming people with different disabilities	NO

Project carried out with the contribution of the





### Rooms/apartments

#### Rooms/apartments adapted for guests with reduced mobility

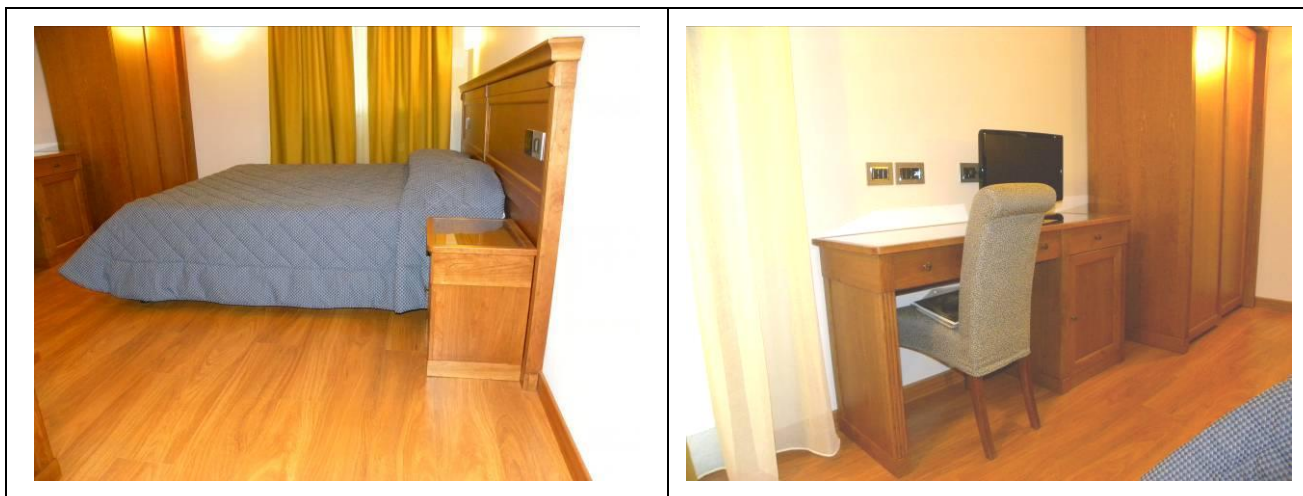
Number and type of rooms/apartments equipped/usable by people with reduced mobility	<input checked="" type="checkbox"/> double rooms    Num . 2
Room access	<input checked="" type="checkbox"/> by elevator    Door width 80 cm, cabin width 110 cm, cabin depth 140 c m , raised keys





<p>Type of entrance door</p>	<p>with lever handle</p>
<p>Usable width of entrance door</p>	<p>86 cm</p>
<p>Bed type and height</p>	<p>double bed</p>
<p>Free spaces on the sides of the bed</p>	<p>left Above 90 cm right Above 90 cm frontal Above 90 cm</p>
<p>Cabinet Type</p>	<p>with doors</p>
<p>Free space under the desk</p>	<p>67 cm</p>
<p>In-room options are available</p>	<p><input checked="" type="checkbox"/> safe <input checked="" type="checkbox"/> minibar <input type="checkbox"/> Water Kettle <input type="checkbox"/> Iron</p>
<p>There is a terrace/balcony/garden (useful door width)</p>	<p>balcony/veranda with door width 80 cm</p>
<p>How to access</p>	<p>flat</p>





**Toilet facilities in the guest room for guests with reduced mobility**

Access to the premises	flat
Usable width of the entrance door	90 cm
Type of door	flowing
Toilet height	45 cm
Toilet seat with open front tooth	YES
Support handles	on both sides
Flexible shower on the side of the toilet	YES
Free space on the sides of the toilet	left Above 90 cm right Not detected frontal Above 90 cm
Electric doorbell/telephone on the side of the toilet	NO
Washbasin with space underneath for wheelchair approach	70 cm
Height from the ground lower edge mirror	Not detected







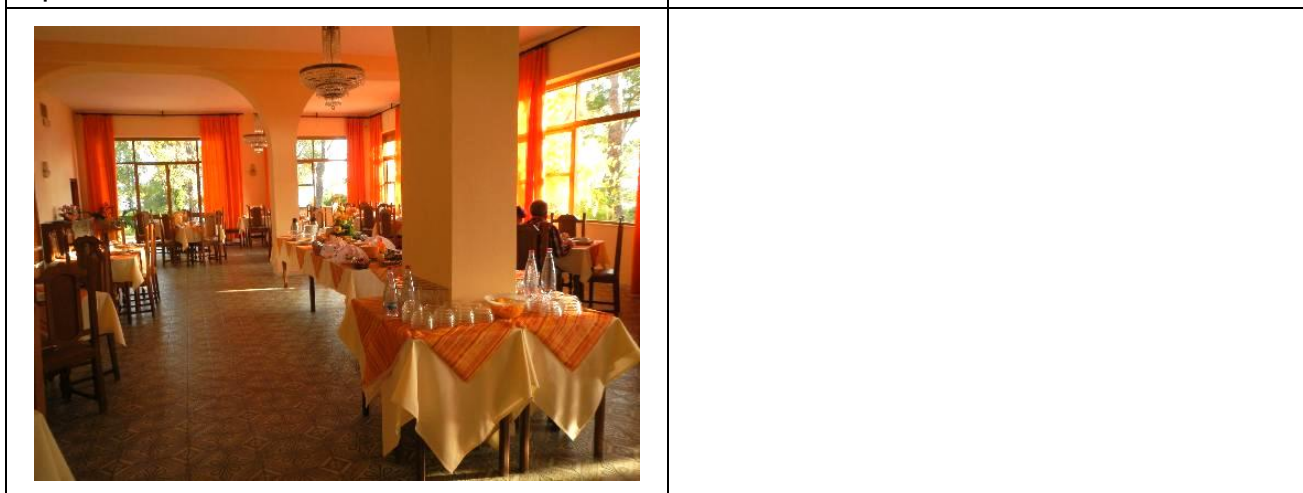
<p>Accessible shower available for guests with reduced mobility</p>	<p>YES flush with the floor</p>
<p>Type of shower</p>	<p>with gate box dimensions 90 cm X 90 cm</p>
<p>Shower chair</p>	<p>collapsible</p>
<p>Support handle</p>	<p>YES</p>
<p>Presence of shower head or sliding rails</p>	<p>with flexible hand shower</p>
<p>Electric doorbell/telephone on the side of the shower</p>	<p>NO</p>





**Bar/restaurant**

Type of venue	Restaurant
Access to the premises	<input checked="" type="checkbox"/> flat
Useful width of door/entrance gate	Above 90 cm
Height of the buffet counter	Above 80
Types of tables	4-shank
Space under floor tables	Less than 75





## Internal pathways and common services

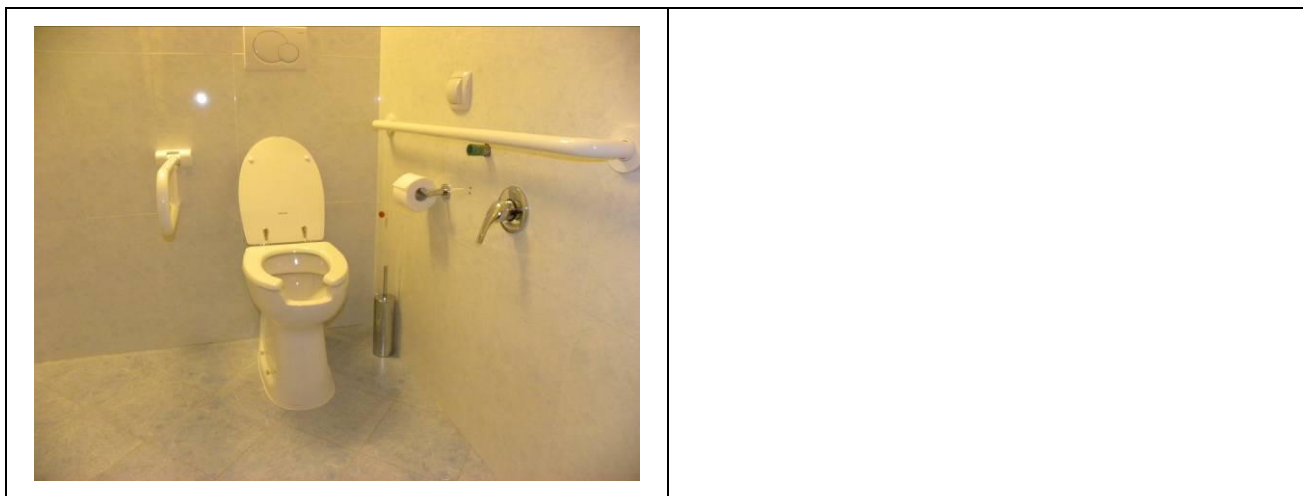
### Internal pathways

From the visited room to the common areas there are maps and tactile signs for the blind	NO
--	----

### Communal toilets

Location of the venue	near the rooms
How to access the premises	flat
Usable width of the entrance door	Above 90 cm
Type of door	sash
Toilet height	52 cm
Toilet seat with open front tooth	YES
Support handles	on both sides
Flexible shower on the side of the toilet	NO
Free space on the sides of the toilet	left cm 20 right Above 90 cm frontal Above 90 cm
Electric doorbell/telephone on the side of the toilet	YES





**Swimming pool**

The property has a swimming pool	for adults with fresh water
Pool with heated water	NO
Access to the swimming pool	flat
Useful width of the entrance gate	Outdoors





## Medical practices/healthcare facilities

Hospitals near the property	Valdichiana Hospital – Nottola Tel +39 0578 713111  Emergency Room c/o Nottola Hospital yellow code Tel +39 0578 713471 Triage Tel +39 0578 713284
Any dialysis facilities	VALDICHIANA NOTTOLA HOSPITAL IN MONTEPULCIANO Garosi Anna - Hemodialysis Nursing Coordinator in Nottola, tel. +39 0578 713266 <a href="mailto:anna.garosi@uslsudest.toscana.it">anna.garosi@uslsudest.toscana.it</a>
Other healthcare facilities	San Cristofano Medical Center, Via P. Calamandrei 49, Montepulciano (SI) Tel +39 0578 336400

