



## Bathing establishment Fact sheet

Name of bathing establishment	La Pinetina
Address	Via Pietrabianca 11
City	Rosignano
Contacts	+39 +39 0586 788224 +39 0586 788093 email: <a href="mailto:info@lapinetinavada.it">info@lapinetinavada.it</a>
Website	<a href="http://www.lapinetina.it">www.lapinetina.it</a>

**TESTED BY:** [Handy Superabile Social Promotion Association](#) in summer 2023

**Please note** The following information refers to the verification date shown at the bottom of each sheet. The Association is not responsible for any significant changes made to the property after the visit.

### Summary

Bathing establishment Fact sheet.....	1
Arrival at the facility.....	2
Private/public parking.....	2
Pathway from the parking lot to the main entrance.....	3
Reception welcome.....	3
Bar/restaurant.....	4
Internal pathways and common services.....	5
Internal pathways.....	5
Toilet and shower accessible to guests with reduced mobility.....	6
Changing room.....	8
Beach.....	9
Children's play area.....	10
Pool.....	11
Medical practices/health facilities.....	11

Project carried out with the contribution of



Presidenza del  
Consiglio dei Ministri  
Ministro per la disabilità



Project promoted by



Regione Toscana

## Arrival at the facility

### Private/public parking

Presence of private parking	YES
Presence of parking space reserved for people with disabilities	YES
Type of parking lot	SELF-LOCKING
Public parking nearby	NO
	
	


Project carried out with the contribution of



Presidenza del  
Consiglio dei Ministri  
Ministro per la disabilità



**Pathway from the parking lot to the main entrance**

Pathway from the parking lot to the entrance	flat
There are indicators and tactile maps	NO
Useful width of door/entrance passage	greater than 90 cm
	

**Reception welcome**

Umbrella booking system	<input checked="" type="checkbox"/> Via the web <input checked="" type="checkbox"/> Via telephone <input checked="" type="checkbox"/> On site
Presence of multilingual staff	YES
Presence of plant plan with legend of services available	YES
Presence of visuo-tactile map	NO
Noticeboard/information panel sat an average height of 130 cm in a well-lit area	NO





and a character size of at least 14 dpi with a contrast ratio greater than 4.5:1	
The staff has undergone training on welcoming people with various disabilities	NO

### Bar/restaurant

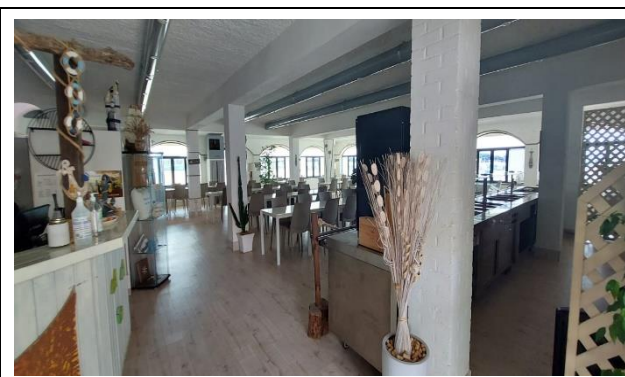
Type of venue	Bar/restaurant
Access to the local bar	with a 6 cm step
Accessed the local restaurant	Ramp 90 cm long, wider than 90, 8% slope
Useful width of door/entrance passage	greater than 90 cm
Bar counter	height greater than 100 cm
Type of restaurant' sTables	4 legged
Type of bar's tables	Central support
Space under the floor tables	greater than 70 cm
Multilingual menu	YES
Menu with large print characters	YES
Braille menu	NO
Table service for people with disabilities	YES
Availability of food for celiacs	<input type="checkbox"/> bread <input type="checkbox"/> pasta <input type="checkbox"/> cookies <input type="checkbox"/> ice creams <input checked="" type="checkbox"/> pre-packaged foods



Project promoted by



Regione Toscana



### Internal pathways and common services

#### Internal pathways

Indicate whether the pathways connecting the entrance to the beach are flat or with ramps in addition to those already described

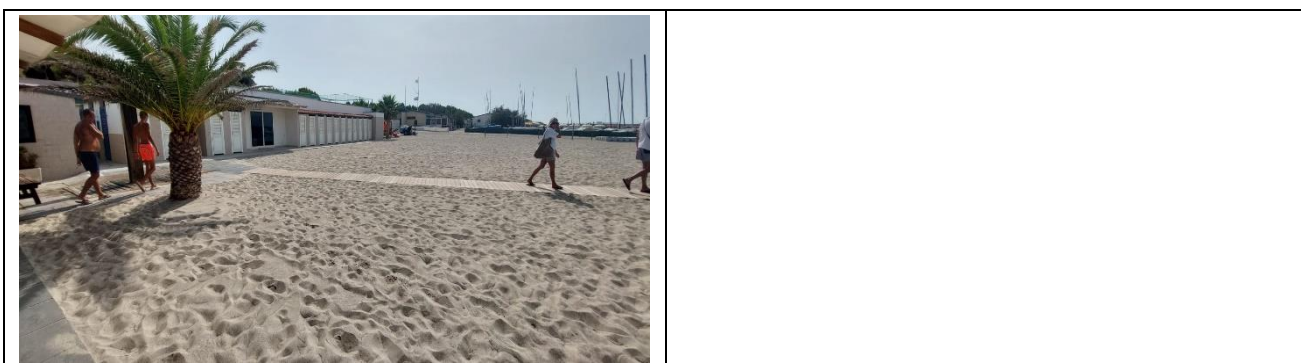
pathways on flat ground and with a ramp 100 cm long and wider than 90 cm with a 7.8% gradient



Project carried out with the contribution of



Presidenza del  
Consiglio dei Ministri  
Ministro per la disabilità



**Toilet and shower accessible to guests with reduced mobility**

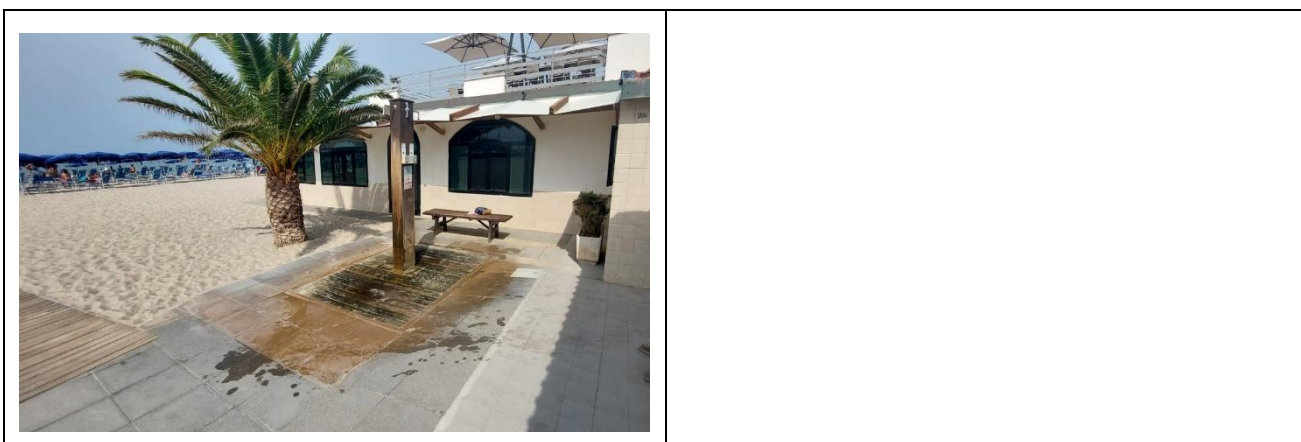
Number of toilets accessible/usable by guests with reduced mobility	1
Access to the venue	via ramp length 110 cm, width 95 cm, slope 5.6%
Useful width of entrance door	greater than 90 cm
Toilet height	50cm
Open front toilet seat	YES
Support handles	on both sides of the toilet
Flexible shower next to the toilet	YES
Free space on the sides of the toilet	to the left 25cm To the right greater than 90 cm Front greater than 90 cm
Electric bell/telephone	YES
Washbasin with space underneath for a wheelchair	greater than 70 cm
Height from the ground to the lower edge of the mirror	not sufficient for use by people in a wheelchair
Baby changing table	YES





<p>Shower accessible to guests with reduced mobility available</p>	<p>YES separated from the toilet room</p>
<p>Access to the shower room if separated from the toilet room</p>	<p>flat</p>
<p>Useful width of entrance door/gap if separated from the toilet room</p>	<p>greater than 90 cm</p>
<p>Shower type</p>	<p>open type</p>
<p>Floor-level shower</p>	<p>YES</p>
<p>Shower chair</p>	<p>missing</p>
<p>Support handle</p>	<p>NO</p>
<p>Presence of shower head or latch</p>	<p>fixed shower head</p>
<p>Electric bell/telephone</p>	<p>NO</p>





**Changing room**



Changing room accessible to guests with reduced mobility available	YES
Access to the venue	flat
Useful width of door/entrance passage	greater than 90 cm
Dimensions of the changing room	sufficient for guest maneuvering in a wheelchair
Presence of cot	YES
Coat stand height from the floor	greater than 140 cm







**Beach**

Type of beach	sand
Access to the beach	flat
Walkway to reach the umbrellas	YES
Type of walkway	Wood
Walkway width	100cm
	
Removable Platform between the walkway and the umbrella station to facilitate the passage and parking wheelchair	YES
Amphibious beach chair available for helping people with reduced mobility to enjoy swimming (owned by the establishment or by association)	YES





**Children's play area**

Children's play area	inaccessible to children with reduced mobility due to the sandy bottom
There are games for children with reduced mobility	NO
Playgrounds	Present and accessible



Project promoted by



Regione Toscana



### Pool

The property has a swimming pool	NO
----------------------------------	----

### Medical practices/health facilities

Hospitals near the facility	Cecina Hospital tel 0586 61411 - 15 km
Other healthcare facilities	ASL Rosignano road A. Moro 2

TESTED BY: Handy Superabile - Social Promotion Association - in summer 2023

Project carried out with the contribution of



Presidenza del  
Consiglio dei Ministri  
Ministro per la disabilità