



## Bathing establishment Fact Sheet

Bathhouse name	Nettuno
Address	Via Costa 3
City	San Vincenzo (Li)
Contacts	Tel.+39 0565701095 Email: <a href="mailto:bagno.nettuno@libero.it">bagno.nettuno@libero.it</a>
Website	<a href="http://www.bagnoristorantenettuno.it">www.bagnoristorantenettuno.it</a>

**TESTED BY:** [Handy Superabile - Social Promotion Association](#) in summer 2023

**Please note** The following information refers to the verification date shown at the bottom of each card. **The Association** is not responsible for any significant changes made by the property after the visit.

### Summary

Bathing establishment Fact Sheet.....	1
Arrival at the facility .....	2
Private/public parking.....	2
Pathway from the parking lot to the main entrance .....	2
Reception.....	3
Bar/restaurant .....	4
Internal Pathways and common services.....	5
Internal Pathways.....	5
Toilet and shower accessible to guests with reduced mobility.....	6
Changing room.....	7
Beach.....	8
Children's play area.....	9
Swimming pool.....	9
Doctors' Offices/Healthcare Facilities.....	9



Project carried out with the contribution of the





## Arrival at the facility

### Private/public parking

Presence of private parking	NO
Public parking nearby	YES
Presence of parking space reserved for people with disabilities	YES
Type of parking surface	ASPHALT
	

### Pathway from the parking lot to the main entrance

Pathway from the car park to the entrance	via 3 ramps: the first 580 cm long, 130 cm wide, 5 % slope; second length 510 cm, width 130 cm, slope 4 %; third length 600 cm, width 130 cm, gradient 9.5%
There are markers and tactile maps	NO
Usable door/entrance width	more than 90 cm





### Reception

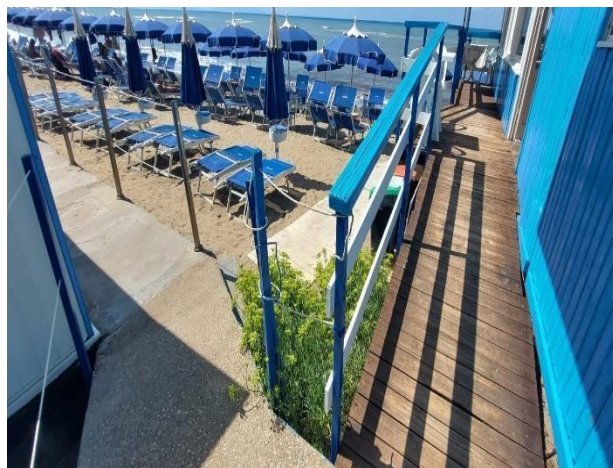
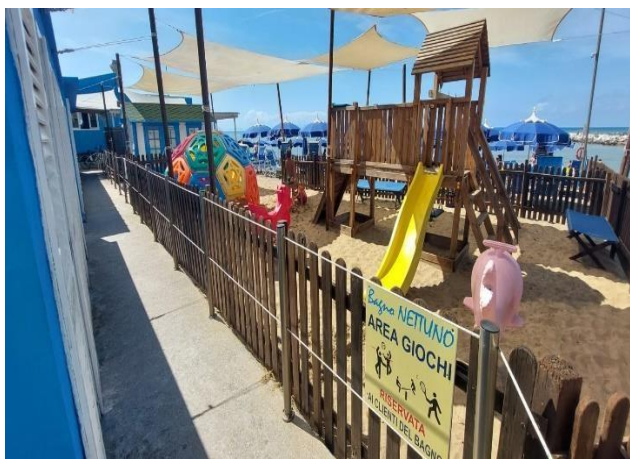
Umbrella booking system	<input checked="" type="checkbox"/> Via web <input checked="" type="checkbox"/> By phone <input checked="" type="checkbox"/> On-site
Presence of multilingual staff	YES
Presence of plant plan with key to services available	NO
Presence of visuo-tactile map	NO
Bulletin board/information panels at an average height of 130 cm in a well-lit area and font size at least 14 dpi with a contrast ratio greater than 4.5:1	NO
The staff attended training courses on welcoming people with different disabilities	NO

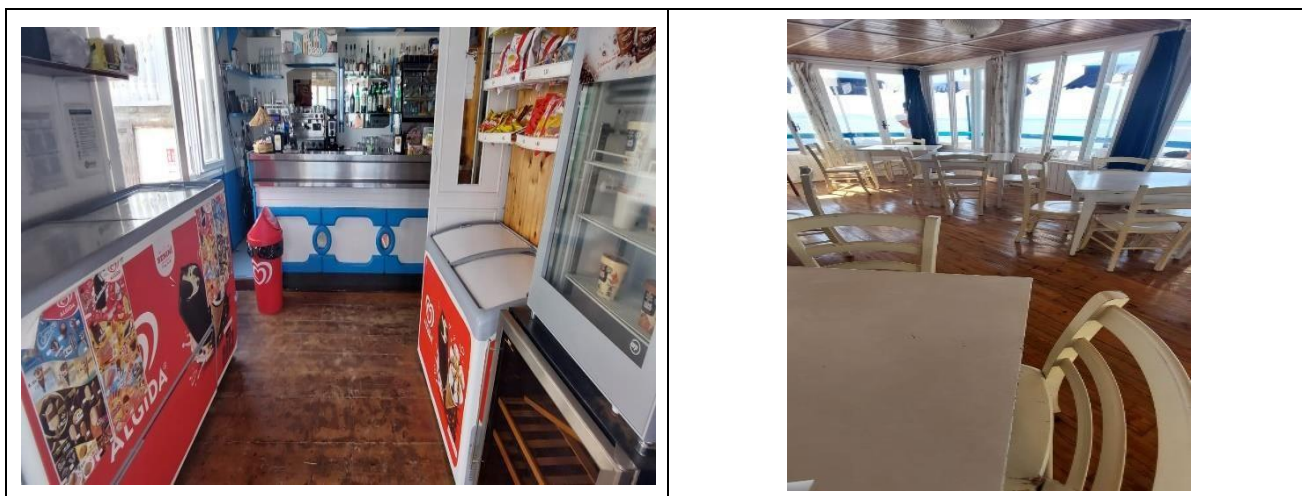




## Bar/restaurant

Type of venue	Bar/restaurant
Access to the premises	by 2 ramps: the first one is 250 cm long, about 120 cm wide, 17% slope; second length 135 cm, width 120 cm, gradient 8 %
Usable door/entrance width	more than 90 cm
Bar counter	height greater than 100 cm
Types of tables	4-legged
Space underneath the tables from the floor	more than 70 cm
Multilingual menu	YES
Menus with large print fonts	NO
Braille menu	NO
Table service for people with disabilities	YES
Availability of gluten-free food	<input type="checkbox"/> bread <input type="checkbox"/> pasta <input type="checkbox"/> biscuits <input type="checkbox"/> ice cream <input checked="" type="checkbox"/> Pre-packaged foods



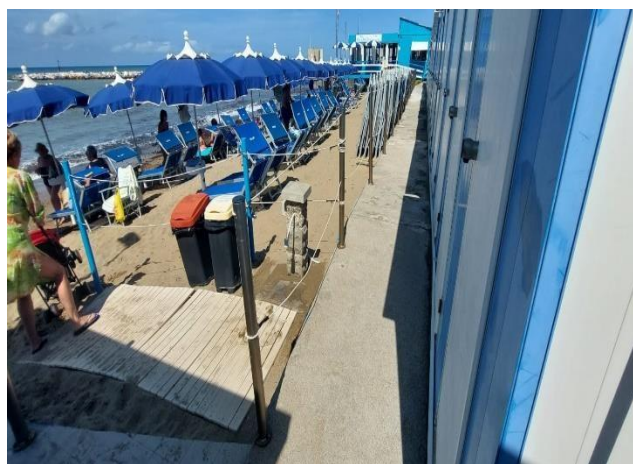


### Internal Pathways and common services

#### Internal Pathways

Indicate whether the pathways connecting the entrance to the beach are flat or with ramps in addition to those already described

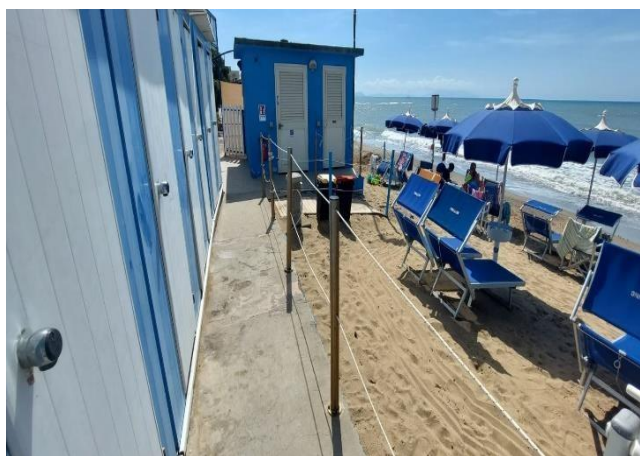
flat paths with a ramp 330 cm long and 120 cm wide with a gradient of 6.5 %





### Toilet and shower accessible to guests with reduced mobility

Number <b>of toilets</b> accessible/usable by guests with reduced mobility	1
Access to the premises	Flat
Usable width of the entrance door	90 cm
Toilet height	50 cm
Open front toilet seat	YES
Support handles	on both sides of the toilet
Flexible hand shower at the side of the toilet	NO
Free space on the sides of the toilet	left 32 cm right 57 cm frontal more than 90 cm
Electric doorbell/phone	NO
Washbasin with space underneath for wheelchair	more than 70 cm
Height from the ground on the bottom edge of the mirror	not sufficient for use by a person in a wheelchair
Baby changing table	YES



Project promoted by



**Regione Toscana**



### Changing room

Accessible changing room available for guests with reduced mobility

YES



Changing room: size about 3 sqm

Project carried out with the contribution of the



**Presidenza del  
Consiglio dei Ministri**  
Ministro per la disabilità



## Beach

Type of beach	sand
Access to the beach	via ramp (walkway) length 330 cm, width 120 cm, gradient 6.5 %
Walkway to reach the umbrellas	YES
Type of walkway	PVC
Walkway width	OTHER
	
Removable Platform between the walkway and the umbrella station to facilitate the passage and parking wheelchair	YES
Amphibious beach chair available for helping people with reduced mobility to enjoy swimming (owned by the establishment or by association)	YES







### Children's play area

Children's play area	inaccessible to children with reduced mobility due to sandy bottom
----------------------	--

### Swimming pool

The property has a swimming pool	NO
----------------------------------	----

### Doctors' Offices/Healthcare Facilities

Hospitals near the facility	<b>Ospedale Villamarina</b> Piombino Tel 0565 67111- Via Carlo Forlanini, 2 a 20 km <b>Cecina Hospital</b> tel. 0586 614111 via Montanara 52/b at 29 km
Other Healthcare Facilities	<b>Asl Health District.</b> Piazza Giovanni XXIII San Vincenzo <b>Dialysis Service on Holiday at Villamarina Piombino Hospital</b> tel. 0565 67283 Via Carlo Forlanini, 2 nefrologia.piombino@uslnordovest.toscana.it

TESTED BY: **Handy Superabile Social Promotion Association in summer 2023**

