



Accommodation Sheet

General information

Accommodation name	Hotel San Ranieri
Typology	Hotel
Address	Via F. Mazzei 2
City	Pisa
Contacts	Phone + 39 050 971951 Email: info@sanranierihotel.com
Website	http://www.sanranierihotel.com/en
WCAG 2.1 compliant accessible website	NO
Online bookings	YES
Short description	The San Ranieri hotel is a modern hotel located in the lively city of Pisa. The location of the San Ranieri hotel is strategic, only 2 km from the railway station and the renowned Piazza dei Miracoli. The rooms of the San Ranieri Pisa hotel will offer you a unique experience with televisions set in mirrors, air conditioning and free Wi-Fi.

TESTED AND REVIEWED BY: [Handy Superabile Social Promotion Association](#) in 2024

Please note The following information refers to the date of verification shown at the bottom of each sheet. **The Association** is not responsible for any significant changes made by the property after the visit.





Summary

Accommodation sheet	1
General information	1
Arrival at the property.....	3
How to reach the property.....	3
Pathway from the private/public car park to the entrance	4
Entrance to the structure.....	6
Hall - Reception	7
Rooms/apartments	8
Rooms/apartments adapted for guests with reduced mobility.....	8
Toilet facilities in the guest room for guests with reduced mobility.....	11
Bar/restaurant	13
Internal pathways and common services	16
Internal pathways.....	16
Communal toilets	17
Meeting	19
Medical practices/healthcare facilities.....	21





Arrival at the property

How to reach the property

By car	<p>From the SGC FI-PI-LI motorway exit PISA NORD-EST: for those coming directly from Livorno or Florence, and for those coming from all other motorways (FIRENZE MARE – GENOA LIVORNO, ROME, MILAN, BOLOGNA), from which you can take the FI-PI-LI directly. From the PISA NORD-EST exit: go straight on Via Giovanni Gronchi and then Via San Pico da Pietralcina. At the traffic lights, turn right, continue the road and you will find yourself in front of the San Ranieri.</p> <p>For holders of disabled badges it is also possible to circulate in the ZTL by requesting access to the Electronic Gates office by calling the number 0508669113</p>
By plane	
Assistance service for people with disabilities	YES
Embarkation/disembarkation of passengers with reduced mobility	with courtesy chair and ambu-lift /Finger. Full assistance is provided on departure and arrival.
Tactile paths for the blind and visually impaired	YES, there are LOGES routes complete with tactile maps to facilitate movement.
There is a toilet room accessible with grab handles	YES
Presence of shuttle to station	YES. Automated ecological shuttle "PEOPLE MOVER" to Pisa central station.





By train	
Nearest station	name Pisa distant 4 km
Assistance service for people with disabilities	YES
Eventual notes	<p>Entrance to the station on level ground and smooth flooring inside. The ticket office has 5 counters. Presence of automatic ticket office with keypad placed 135 cm from the ground.</p> <p>Assistance service is provided by reservation: Email SalaBlu.Firenze@rfi.it or by calling the toll-free number 800906060 from a landline and from a mobile phone to the number 02323232 then dialing the area code of the place where assistance is requested.</p> <p>Access to the carriages is by forklift, or, only in some trains, by means of a lift placed at the entrance of the dedicated carriage, or by means of a removable slide for some carriages without a difference in height.</p>

Pathway from the private/public car park to the entrance

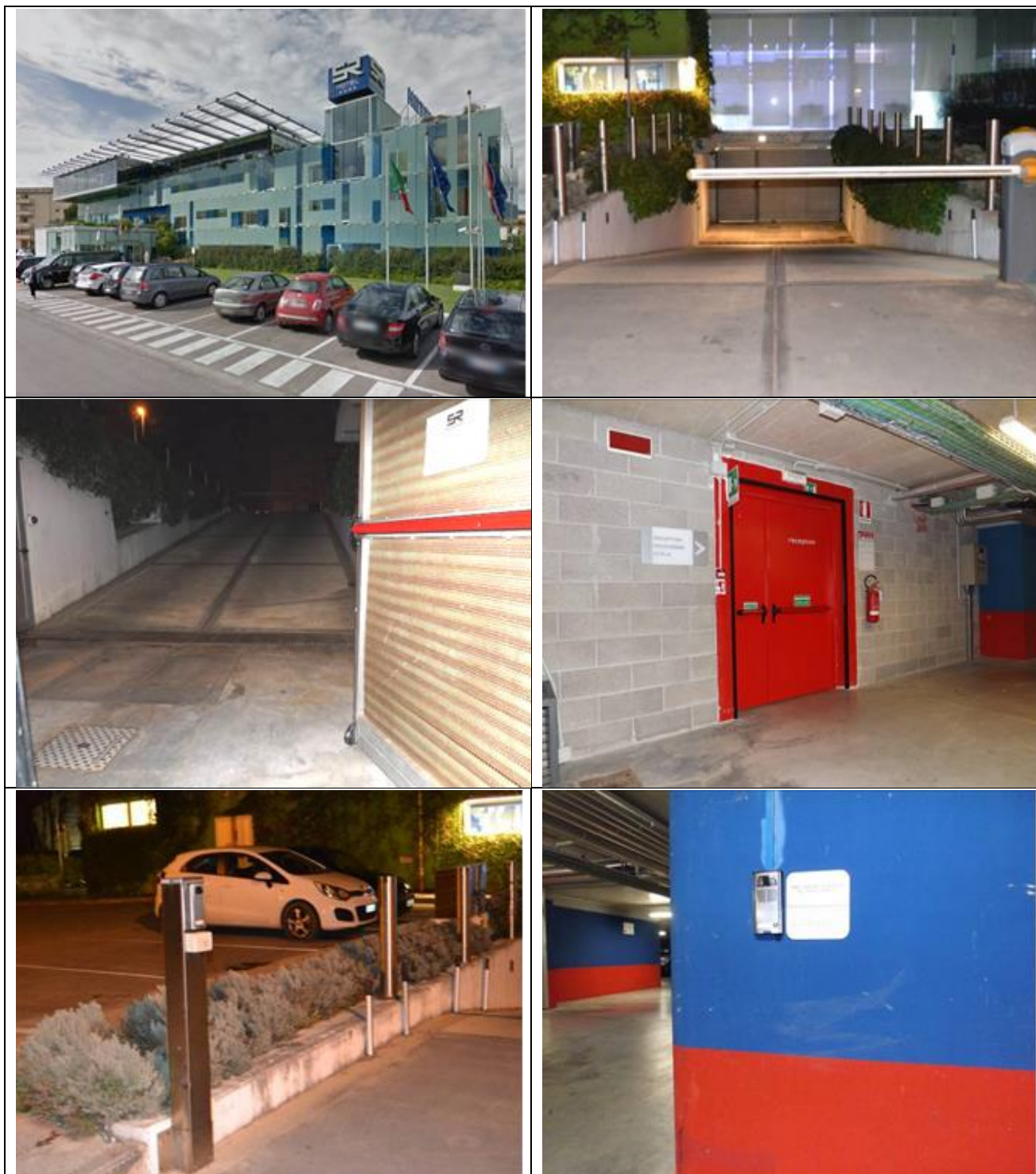
Presence of private parking	YES one external, the other covered accessible via a bar and up-and-over door that can be operated via intercom that can be reached from the car without getting out.
Presence of parking space reserved for people with disabilities	SI num.2
Type of flooring of the private parking lot	Asphalt and concrete
Distance from parking to entrance	A few meters
Eventual notes	From the garage you can easily reach the hall and the rooms through a door with wide opening and panic bar.



Project promoted by



Regione Toscana





Project carried out with the contribution of the



Presidenza del
Consiglio dei Ministri
Ministro per la disabilità



Entrance to the structure

There is an accessible entrance	YES main entrance
How to access the structure	<input checked="" type="checkbox"/> flat with a small step of 2 cm
Type of entrance door	Automatic
Useful width of door/entrance gate	Above 90 cm
There are indicators and tactile maps	NO
	





Hall - Reception

How to reach it from the entrance	flat
Reception desk height	116 cm
Presence of multilingual staff	YES
Type of information material	<input checked="" type="checkbox"/> YES with brochure
Initial assistance is provided for visitors with disabilities	<input checked="" type="checkbox"/> YES with orientation tour of the structure <input checked="" type="checkbox"/> YES with room accompaniment <input type="checkbox"/> YES with porter service
The following aids are provided for visitors with disabilities	<input type="checkbox"/> manual wheelchair <input type="checkbox"/> Crutches <input type="checkbox"/> Comfortable shower chair
The staff followed a training course on welcoming people with different disabilities	NO





Rooms/apartments

Rooms/apartments adapted for guests with reduced mobility

<p>Number and type of rooms/apartments equipped/usable by people with reduced mobility</p>	<p><input checked="" type="checkbox"/> double rooms 6 Num .</p>
<p>Access to the room from the lobby</p>	<p><input checked="" type="checkbox"/> by elevator 80 cm cab, cab interior with W . 115 cm and depth 140 cm, equipped with a support handle. Call button located 122 cm above the ground and embossed/braille control keypad with the highest key placed 118 cm from the ground.</p>





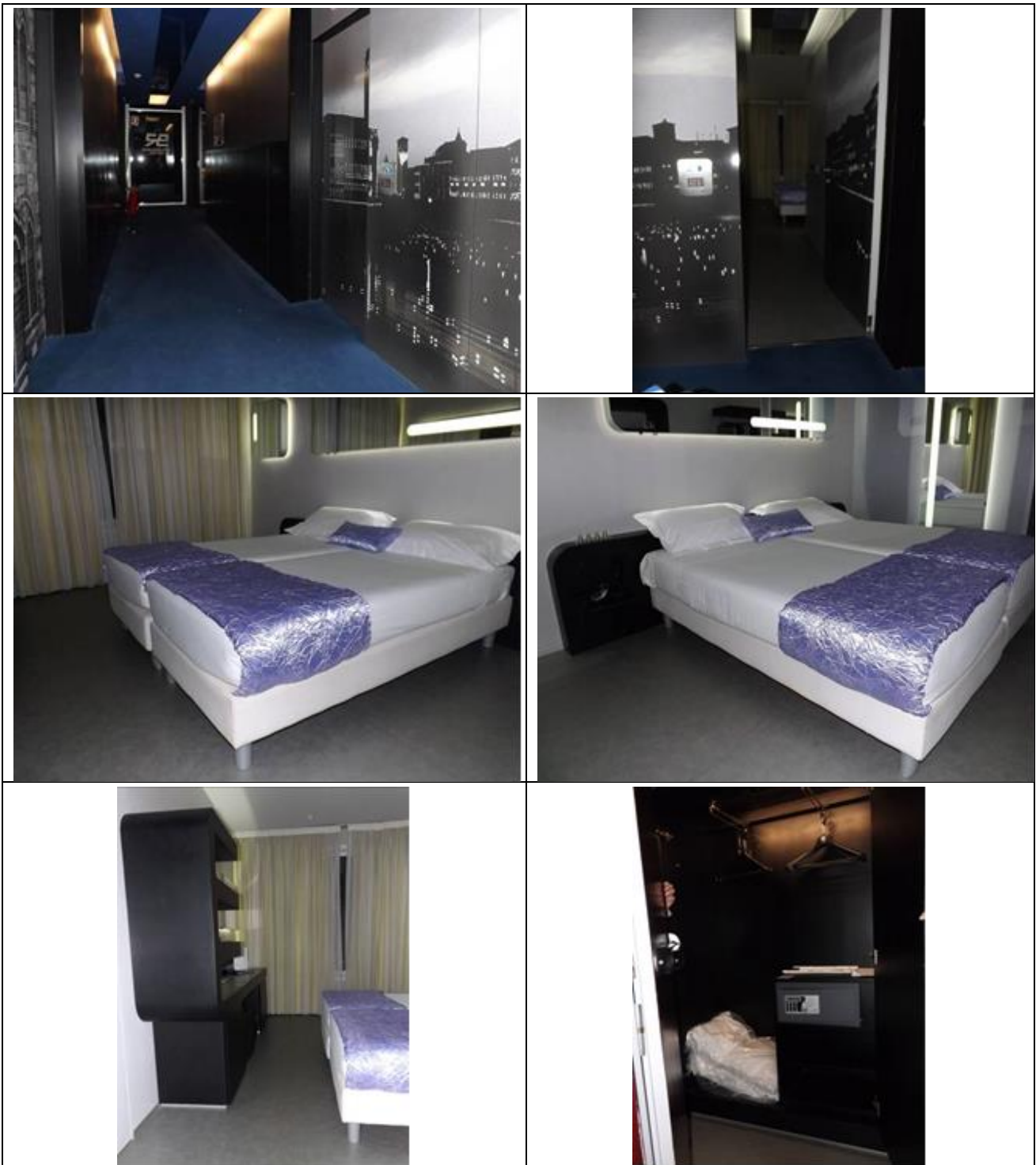
Room access	<input checked="" type="checkbox"/> flat
Type of entrance door	Via magnetic card
Usable width of entrance door	80 cm
Bed type and height	single beds 50 cm high
Free spaces on the sides of the bed	left 149 cm right 63 cm frontal 70 cm
Cabinet Type	with doors with coat hanger 176 cm from the floor
Free space under the desk	66 cm
In-room options are available	<input checked="" type="checkbox"/> safe <input checked="" type="checkbox"/> minibar <input type="checkbox"/> Water Kettle <input type="checkbox"/> Iron
There is a terrace/balcony/garden (useful door width)	NO



Project promoted by



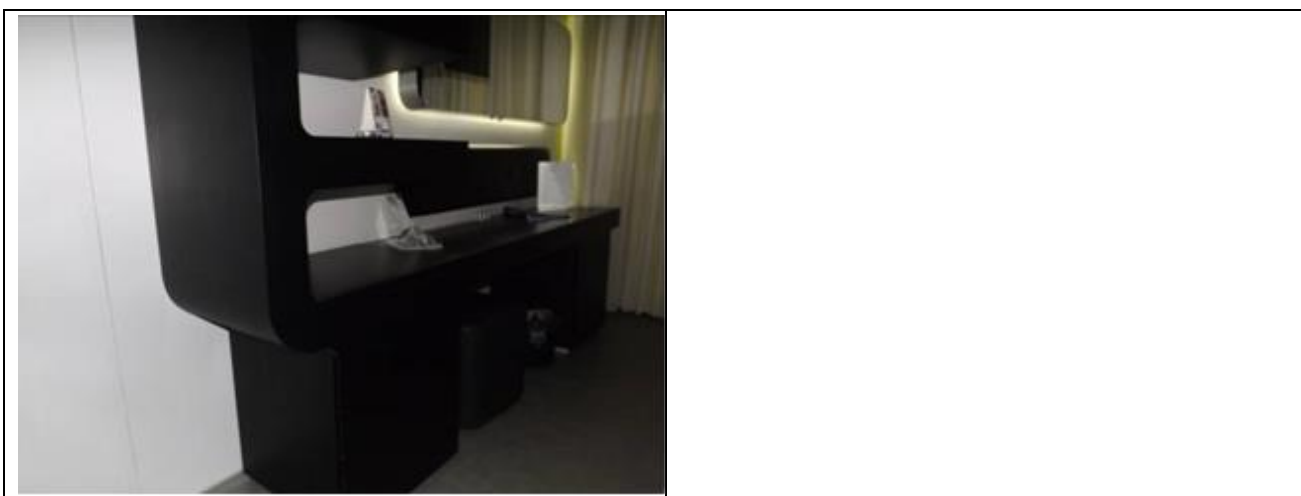
Regione Toscana



Project carried out with the contribution of the



**Presidenza del
Consiglio dei Ministri**
Ministro per la disabilità



Toilet facilities in the guest room for guests with reduced mobility

Access to the premises	flat
Usable width of the entrance door	81 cm
Type of door	sash
Type of handle	lever
Toilet height	50 cm
Toilet seat with open front tooth	NO
Support handles	to the right of the toilet
Flexible shower on the side of the toilet	YES
Free space on the sides of the toilet	left 20 cm right Above 90 cm frontal Above 90 cm
Electric doorbell/telephone on the side of the toilet	NO
Washbasin with space underneath for wheelchair approach	75 cm
Height from the ground lower edge mirror	not sufficient for use by a person in a wheelchair





Shower accessible to guests with reduced mobility available	YES flush with the floor
Type of shower	dimensions 89 cm X 89 cm
Shower chair	missing
Support handle	YES
Presence of shower head or sliding rails	Ups and downs with lowest point height 120 cm
Electric doorbell/telephone on the side of the shower	NO
Eventual notes	The hairdryer is placed at a height of 135 cm from the ground.





Bar/restaurant

Type of venue	Restaurant
Access to the premises	<input checked="" type="checkbox"/> flat
Useful width of door/entrance gate	Above 90 cm
Bar counter height	Choose an item.
Height of the buffet counter	Not detected
Types of tables	with central support
Space under floor tables	73 cm
Availability of high chairs for babies	YES
Multilingual menu	YES
Menu with app	Not detected
Braille menu	Not detected
Table service for people with disabilities	YES
Availability of foods for celiacs	<input type="checkbox"/> bread, pasta, biscuits, ice cream <input type="checkbox"/> <input type="checkbox"/> <input type="checkbox"/> <input type="checkbox"/> pre-packaged foods
There are coffee and milk dispensers	NO table service is available
A customer with reduced mobility can always reserve the same table	YES
There are toilets that can be used by a guest with reduced mobility (see "accessible toilets in the internal paths and common services)	YES on the floor – 1 reachable by elevator
There is an area reserved for lunch for younger guests	Not detected
A fully equipped baby feeding service is available	Not detected



Project promoted by



Regione Toscana



Project carried out with the contribution of the



Presidenza del
Consiglio dei Ministri
Ministro per la disabilità





The restaurant has an outdoor veranda / dehors	YES veranda with flat access
Types of tables	4-shank
Space under floor tables	68 cm
	
	
Type of place "Wave bar"	Bar
Access to the premises	<input checked="" type="checkbox"/> flat
Useful width of door/entrance gate	Above 90 cm
Bar counter height	114 cm
Types of tables	Present sofas
Multilingual menu	YES

Project carried out with the contribution of the





Menu with app	Not detected
Braille menu	Not detected
Table service for people with disabilities	YES
A customer with reduced mobility can always reserve the same table	YES
There are toilets that can be used by a guest with reduced mobility (see "accessible toilets in the internal paths and common services)	YES on the floor – 1 reachable by elevator
	

Internal pathways and common services

Internal pathways

Approximate distances from the room/apartment/bungalow visited and intended for customers with disabilities up to the various main common areas	Entrance (Hall) m 50 Main restaurant m 50
Indicate whether the paths connecting with the common areas are flat or with ramps or steps, in addition to those already described	Entrance (Hall) flat Main restaurant flat





From the visited room to the common areas there are maps and tactile signs for the blind	NO
--	----

Communal toilets

Location of the venue	near the lobby floor - 1
How to access the premises	flat and by elevator
Usable width of the entrance door	89 cm
Type of door	flowing
Type of handle	lever
Toilet height	50 cm
Toilet seat with open front tooth	NO
Support handles	to the left of the toilet
Flexible shower on the side of the toilet	YES
Free space on the sides of the toilet	left 37 cm right Above 90 cm frontal Above 90 cm
Electric doorbell/telephone on the side of the toilet	NO
Washbasin with space underneath for wheelchair approach	Above 70 cm
Height from the ground lower edge mirror	Missing mirror
Baby changing table	NO



Project promoted by



Regione Toscana



Project carried out with the contribution of the

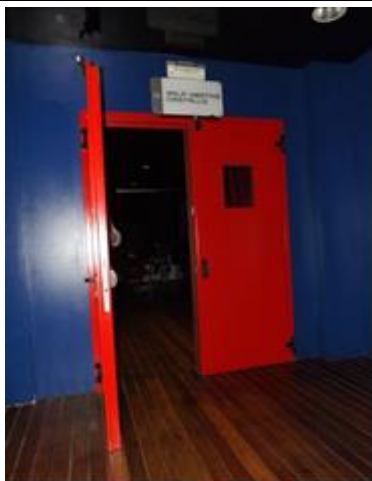


**Presidenza del
Consiglio dei Ministri**
Ministro per la disabilità



Meeting

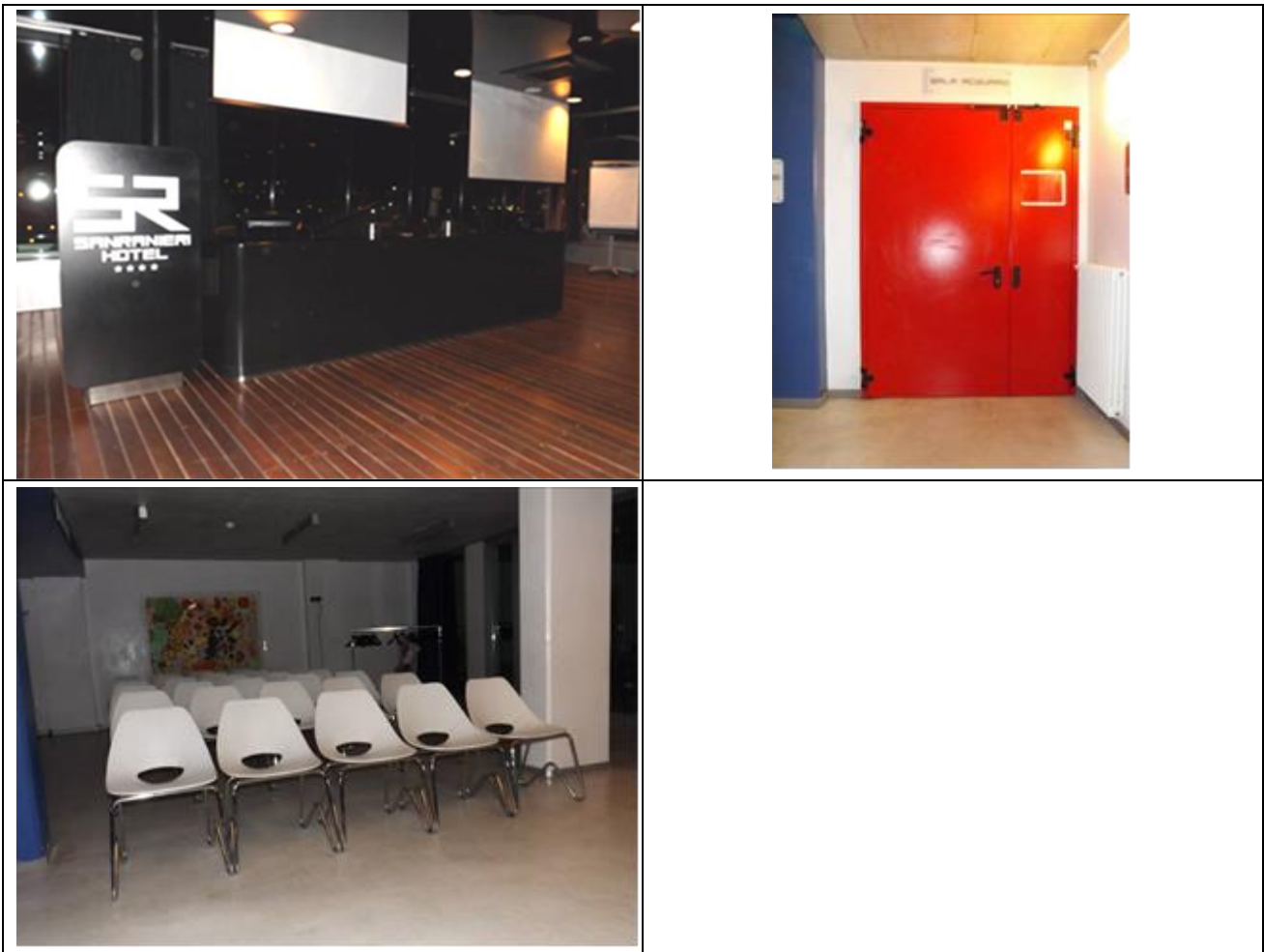
There is a meeting room in the structure	YES on floor 3
How to access	with elevator
Useful width of door/entrance gate	Above 90 cm
There are stations for wheelchair users	YES in the front row of the grandstand
Eventual notes	<p>Sala Cristallo photo 1.2 3 (157 sqm) Capacity for 130 people, large outdoor terrace to organize coffee breaks and light lunches, secretarial office and wardrobe, wi-fi internet, fixed microphones and radio, natural light that can be darkened with an automated curtain system.</p> <p>Aquarium Room photos 4 and 5 (74 sqm) Capacity up to 40 people, secretarial and cloakroom, wi-fi internet, video projector with screen, automated curtain system, 42" LCD TV.</p>



Project promoted by



Regione Toscana



Project carried out with the contribution of the



**Presidenza del
Consiglio dei Ministri**
Ministro per la disabilità



Medical practices/healthcare facilities

Hospitals near the property	Pisano Cisanello University Hospital, Via Paradisa 2, Pisa – Phone +39 050 992111 Santa Chiara Hospital Via B. Pisano 10, Pisa - Phone +39 050 992111 Pronto Soccorso at Ospedale Cisanello, Pisa - Telephone +39 050 992300
Any dialysis facilities	Cisanello Hospital Pisa. In the period June-September holiday dialysis service with availability of n. 6 beds; The treatments will be divided into three days a week (Monday, Wednesday and Friday) in the evening from 18.00 to 24.00 Phone +39 050 997250/997253/997256 call from 8.00 a.m. to 2.00 p.m. Email nefrotrap.pisa@ao-pisa.toscana.it
Other healthcare facilities	San Rossore Nursing Home (Private Hospital) Via delle Cascine 152/F Phone +39 050 586111

